

JESUS OLD MEMBERS GROUP (XL NETWORK)

Visit to Kew Gardens on 6th September 2018



Dear Old Member

The Temperate House at Kew Gardens has recently reopened after a long period of renovation, and it was felt that now was an opportune moment for a visit by the group.

There will be a guided tour of the Temperate House, followed by lunch at the Ma Cuisine bistro (next to Kew Gardens Station).



Photos courtesy of Chris Scrivener and Chris Hicks

The Temperate House houses an internationally important collection of temperate zone plants, including some of the rarest and most threatened. It was designed by Decimus Burton, who also designed the Palm House at Kew. Building began in 1860 and it opened to the public in 1863. It is twice the size of the Palm House and is home to temperate plants from Africa, Australia, New Zealand, the Americas, Asia and the Pacific Islands.

There are of course other attractions at Kew Gardens that members may wish to visit. The Great Pagoda was completed in 1762 and is a ten storey octagonal structure almost 50m high. It also has been closed for restoration but has recently reopened. The original 80 gilded dragons that adorned the 10 storeys were removed in 1784 and never seen since. These dragons have now been restored. There is an extra fee for entry to the Pagoda for anyone wishing to ascend the 253 steps to the top!

The programme is as follows:-

10.50am - Congregate at the Victoria Gate Information Desk for the guided tour.

Tickets will be sent out ahead of the event. The gardens open to the public at 10.00 and members may enter any time after that. Entry can be by any gate, but members must be at the Victoria Gate by 11.00 for the guided tour.

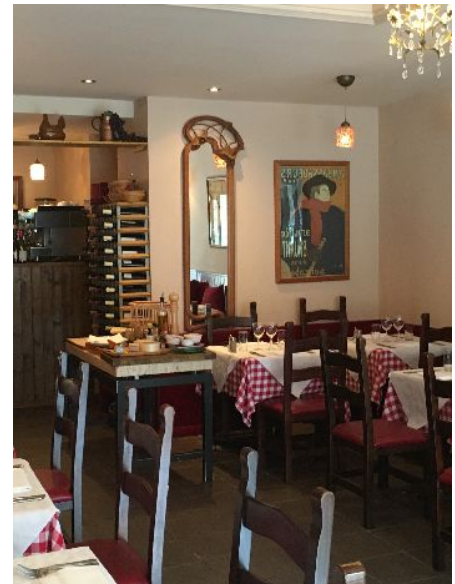
11.00am - Guided tour leaves Victoria Gate for the Temperate House.

Guides have been booked for 60 minutes and the Temperate House will be the focus of the tour. There will be free time after the tour for a cup of tea or coffee, a visit to the Great Pagoda close by the Temperate House or other attractions such as the Hive or the Princess of Wales Conservatory further to the north of the gardens.

12.50pm - Meet at the Victoria Gate for 10 minute walk to Ma Cuisine bistro.

1.00pm - Lunch at Ma Cuisine (50m from Kew Gardens tube station).

Tickets should be retained if you want to return to the gardens after lunch.



The full cost for entry to Kew Gardens, guided tour and lunch with a glass of wine is **£50**. Members who are **Friends of Kew** or can gain free entry by other means (but not by climbing over the wall!) may pay a reduced amount of **£37**.

A Booking Form is attached. Please complete and return if you wish to attend. Apply early to avoid disappointment, and no later than **12th August**.

Chris Hicks

JOMG Events Co-ordinator